

9 CAM

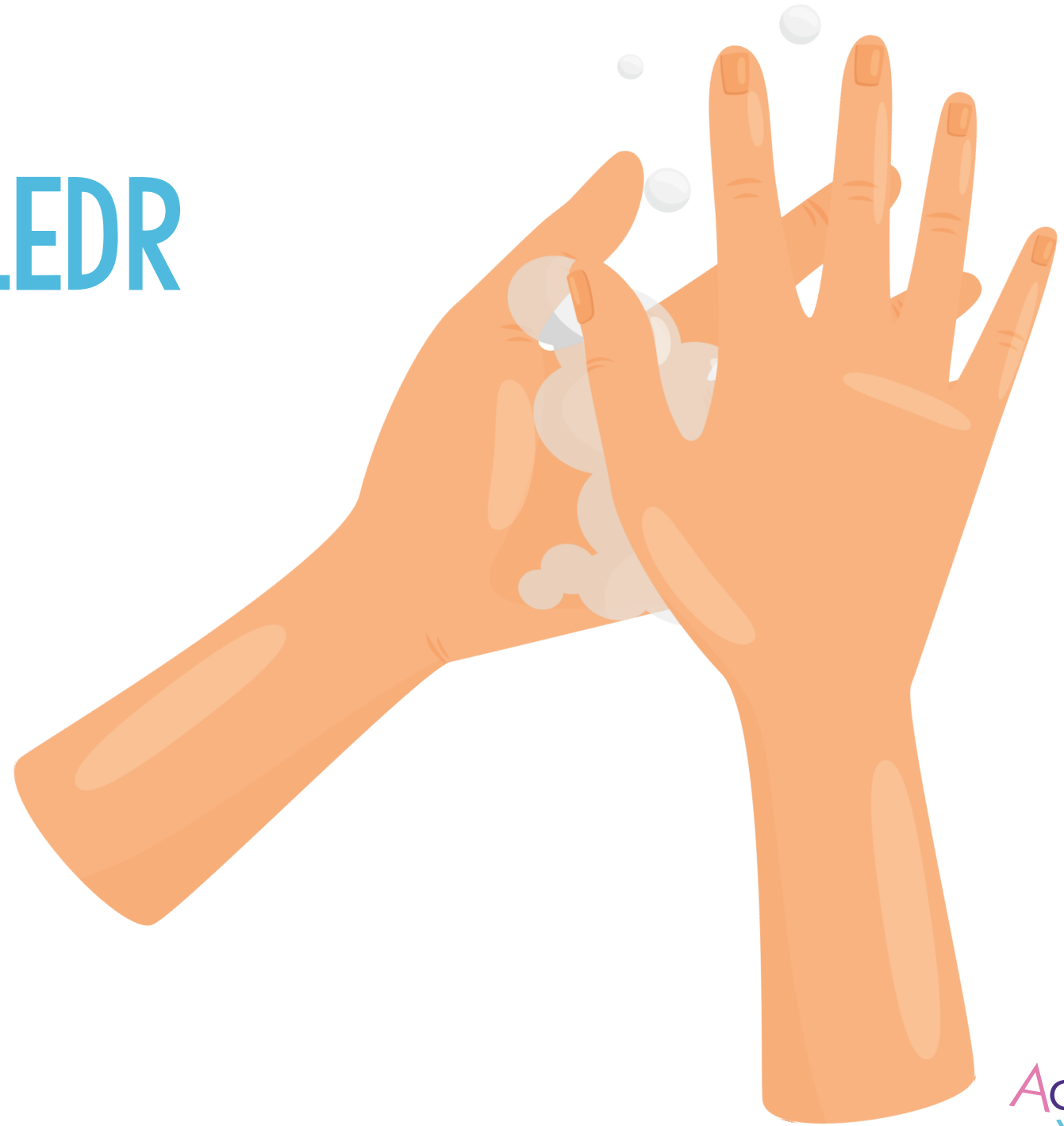
AT

DDWYLO GLÂN



1. DEFNYDDIWCH SEBON

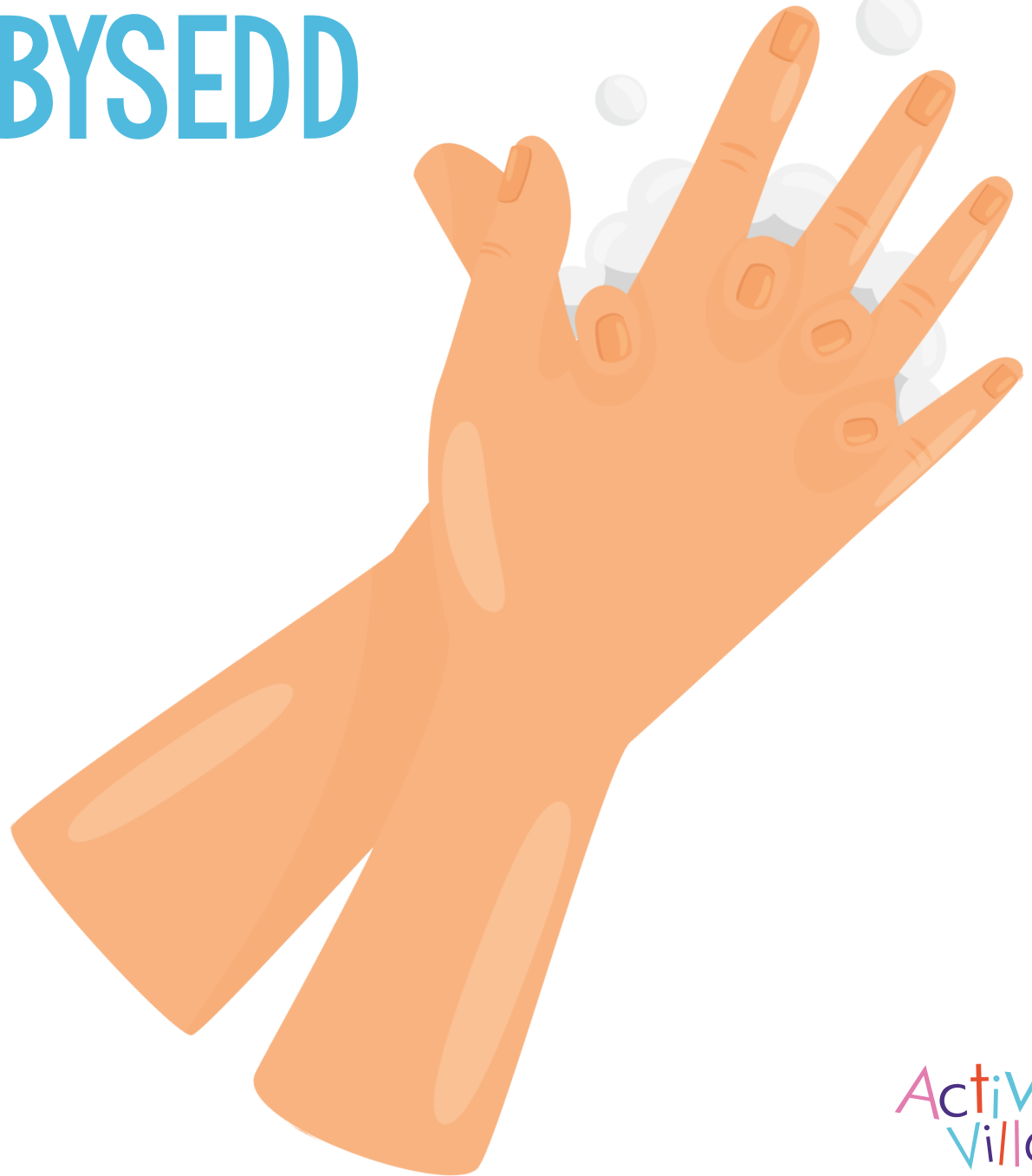
2. CLEDR WRTH GLEDR



3. CEFN Y DWYLO

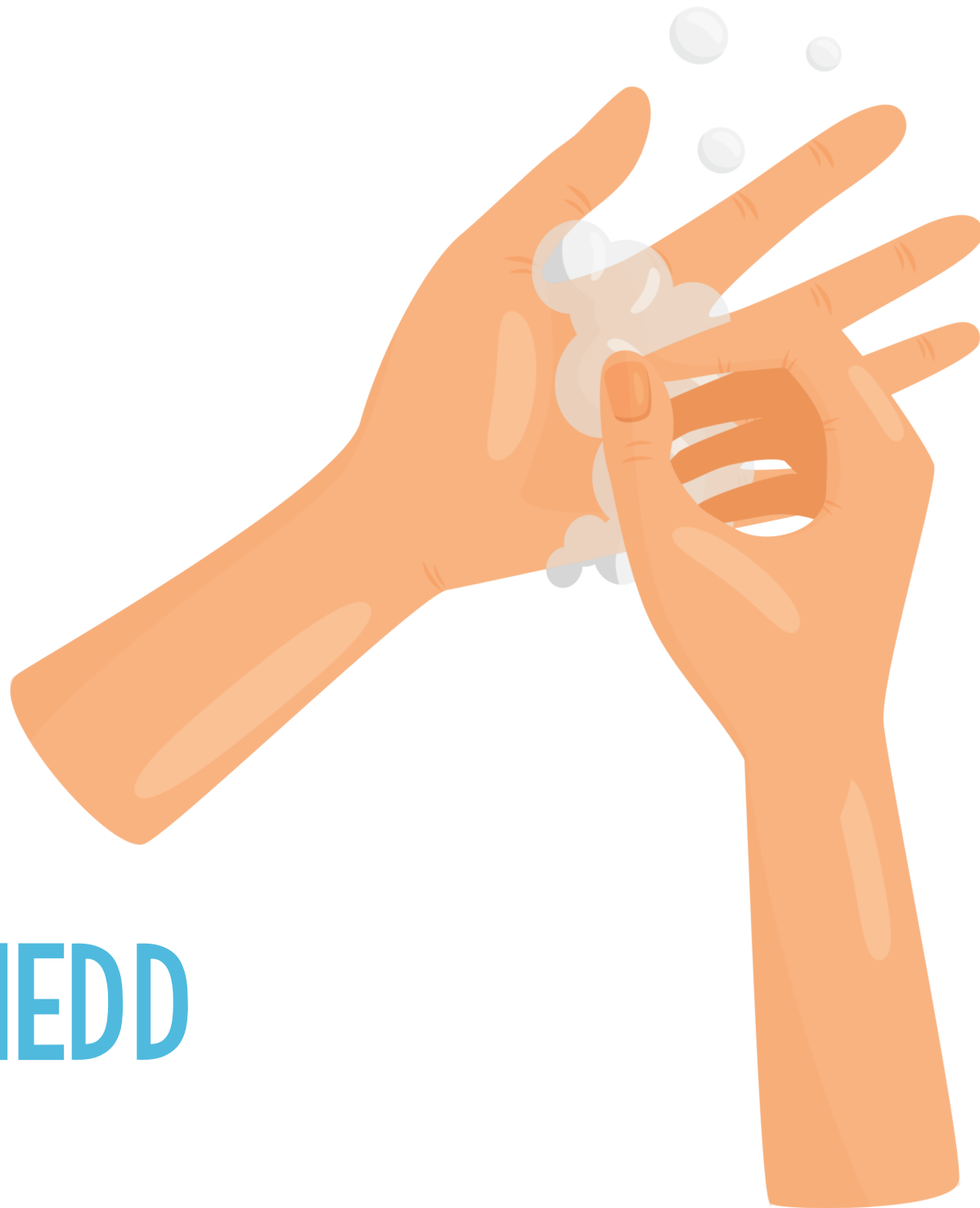


4. RHWNG Y BYSEDD



5. GWAELOD Y BODIAU





6. EWINEDD

7. GARDDYNAU



8. RINSIO'N DDA



9. DWYLO SYCH

